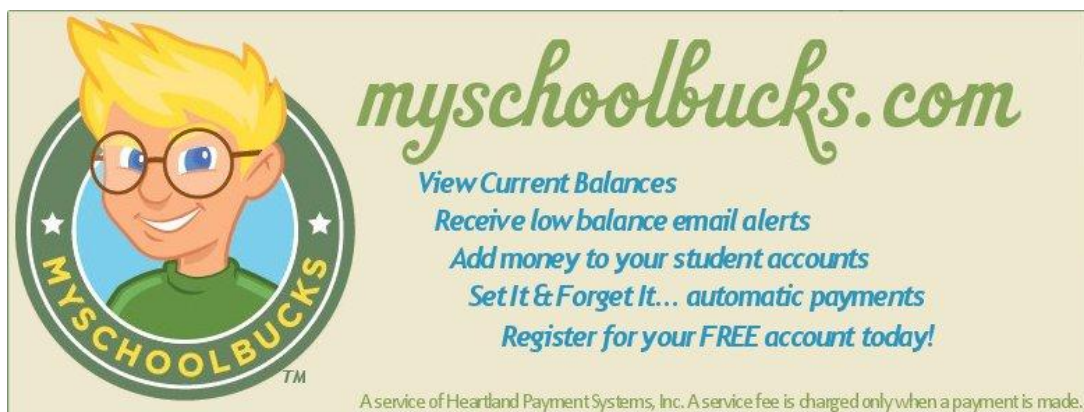


Dear Parents and Students:

We strive to get all students to class quickly. Unfortunately, we are experiencing delays because unidentified loose money is being sent in. Whether you're paying for the day or multiple days, please help us by clearly writing who your payment is for. Every student has an account and we would like to ensure all payments are applied correctly.

All money must be sent in an envelope or zip lock bag with your child's name clearly written on the outside.



Did you know?

- ❖ **School Meal Benefit Applications may be submitted to the school at any time during the school year.**
- ❖ **Your child(ren) may qualify for free or reduced priced school breakfast and lunch.**
- ❖ **Please contact your child's school to obtain an application.**

In accordance with Federal law and U.S. Department of Agriculture policy, this institution is prohibited from discriminating on the basis of race, color, national origin, sex, age, or disability. To file a complaint of discrimination, write to *USDA, Director, Office of Civil Rights, 1400 Independence Avenue, SW, Washington DC 20250-9410* or call 800-795-3272 or 202-720-6382 (TYY). USDA is an equal opportunity provider and employer.

In addition, Rhode Island does not discriminate on the basis of sexual orientation or religion. To file a complaint of discrimination in the food program on the basis of sexual orientation or religion, contact: RI Department of Education, Office of Personnel, 255 Westminster Street, Providence, RI 02903 or call (401) 222-8437.